

SOCAL LIVESTOCK OPEN RABBITS

ENTRIES ARE DUE ONLINE BY OCTOBER 2, 2024, 11:59 PM PST

OPEN RABBITS

This is an official American Rabbit Breeders Association-sanctioned OPEN show.
A.R.B.A. National Convention
PO Box 5667
Bloomington, IL 61702

The SoCal Jr. Livestock Show will be partnering with RCRBA to host 2 additional shows for Open Rabbits, Youth Rabbits, and Open Cavies. All entries in the SoCal Jr. Livestock Show will be entered in the RCRBA show. Animals not entered in the SoCal Jr. Livestock Show will not be eligible for the RCRBA show. In order to, participate in the RCRBA show, exhibitors will pay an \$8.00 entry fee per animal directly to RCRBA at check-in time on the day of the show (Sunday, Oct. 6).

SHOW RULES, DEFINITIONS, AND JUDGING PROCEDURES AS PRESCRIBED IN THE LATEST EDITION OF THE STANDARD OF PERFECTION OF THE AMERICAN RABBIT BREEDERS ASSOCIATION, INC., SHALL APPLY TO SOCAL LIVESTOCK SHOW, PROVIDED THEY DO NOT CONFLICT WITH ANY RULES AND REGULATIONS PRESCRIBED BY THE DEPARTMENT OF FOOD AND AGRICULTURE. PLEASE READ ALL RULES CAREFULLY. FAILURE TO RECOGNIZE ANY OR ALL RULES WILL EXCLUDE ENTRY.

LOCAL RULES

1. ALL RABBITS AND CAVIES MUST BE IDENTIFIED BY PERMANENT EAR MARKINGS IN THE LEFT EAR AT THE TIME OF ENTRY. NO EXCEPTIONS. ANY DUPLICATION OF EAR MARKINGS BY ONE EXHIBITOR IN THE SAME CLASS OR ILLEGIBLE EAR MARKINGS WILL ELIMINATE/CAUSE ENTRIES TO BE DISQUALIFIED.
2. UNHEALTHY ANIMALS WILL NOT BE ACCEPTED AND IF ANY ANIMAL SHOULD BECOME SICK WHILE IN THE SHOW, THEY MUST BE IMMEDIATELY REMOVED BY THE EXHIBITOR.
3. ANIMALS WILL BE SHOWN AND JUDGED IN THE PROPER DIVISION AND CLASS FOR BREED VARIETY, AGE, AND SEX ONLY. IF NO CLASS IS OFFERED NO AWARDS MAY BE MADE. RABBITS & CAVIES THAT ARE DISQUALIFIED FOR BEING ENTERED IN THE WRONG CLASS AND THOSE ABSENT AT THE TIME OF JUDGING DO NOT COUNT WHEN COMPUTING THE NUMBER OF EXHIBITS IN THE CLASS.
4. ALL EXHIBITS ARE ENTERED AND SHOWN AT THE OWNER'S RISK.
5. PRECAUTIONS WILL BE TAKEN TO ELIMINATE DANGER AND MISTAKES IN HANDLING AND RETURN OF THE STOCK. THE SOCAL LIVESTOCK SHOW MANAGEMENT OR ITS REPRESENTATIVES WILL NOT BE RESPONSIBLE FOR ANY LOSS, DAMAGE, ACCIDENT OR DEATH OF ANY EXHIBIT DURING THE SHOW OR IN TRANSIT.
6. A JUDGE MAY ELIMINATE (EXCUSE) A RABBIT FROM COMPETITION BECAUSE OF TEMPORARY OR CURABLE DEFECTS BUT THE RABBIT & CAVY SHOULD BE COUNTED AS AN ENTRY.
7. RABBITS ARE ENTERED BY AGE AND BY WEIGHT - PLEASE WEIGH YOUR RABBITS PRIOR TO ENTRY! OVERWEIGHT JUNIORS AND INTERMEDIATES MAY BE ENTERED IN THE SENIOR CLASS. UNDERWEIGHT SENIORS MAY NOT BE ENTERED IN THE JUNIOR OR INTERMEDIATE CLASSES. NO RABBIT MAY BE ENTERED IN A CLASS LOWER THAN ITS TRUE AGE. CONSULT THE ARBA STANDARD OF PERFECTION IF YOU HAVE ANY QUESTIONS.
8. ALL EXHIBITS MUST BE THE BONA FIDE PROPERTY OF THE EXHIBITOR.

SPECIAL RULES

1. ENTRY LIMIT: THERE IS NO LIMIT OF ENTRIES; HOWEVER, NO EXHIBITOR SHALL RECEIVE MORE THAN TWO CASH AWARDS IN ANY ONE CLASS. STATE RULE IV-6.
2. ENTRY: ENTRIES MUST BE MADE ONLINE. PLEASE LIST BREED, SHOW COLOR VARIETY, AND EAR NUMBERS.
3. SUBSTITUTIONS: SUBSTITUTIONS MAY BE MADE ONLY IN THE SAME DIVISION OF THE ORIGINAL ENTRY DUE.
SEE STATE RULE II-5. A PENALTY OF \$5.00 MUST BE PAID PRIOR TO JUDGING FOR EACH SUBSTITUTION MADE BY THE EXHIBITOR MORE THAN TWO.
4. NO PROVISIONS WILL BE MADE FOR THE CARE OF ANIMALS AFTER THE TIME FOR REMOVAL HAS ENDED. PLEASE GET RELEASE FORMS FOR YOUR ANIMALS, AND AN ATTENDANT WILL CHECK YOUR ANIMALS AND RELEASE FORM BEFORE YOU MAY EXIT.
5. PLEASE LISTEN CAREFULLY FOR YOUR CLASS TO BE CALLED. NO CLASSES WILL BE REJUDGED FOR MISSING ANIMALS! ONLY ANIMALS PROPERLY ENTERED WILL BE PERMITTED IN THE SHOW.
6. NO SALE OF RABBITS OR CAVIES WILL BE ALLOWED ON FAIRGROUNDS. NO EXCEPTIONS!
7. ALL AWARDS WILL BE PASSED OUT AT THE TIME THE EXHIBITS ARE RELEASED. NO EXCEPTIONS!

SOCAL LIVESTOCK OPEN RABBITS

ENTRIES ARE DUE ONLINE BY OCTOBER 2, 2024, 11:59 PM PST

OPEN RABBITS

THIS IS A ONE DAY CARRY IN SHOW

ENTRY FEE: \$3.50

AWARDS OFFERED PER CLASS

BEST IN SHOW

RESERVE IN SHOW

AMERICAN SYSTEM OF JUDGING

SENIOR BUCK & SENIOR DOE: 8 MONTHS OF AGE AND OVER

INTERMEDIATE BUCK & INTERMEDIATE DOE: 6 MONTHS TO 8 MONTHS

JUNIOR BUCK & JUNIOR DOE: UNDER 6 MONTHS OF AGE

**INDICATES HEAVY WEIGHT BREEDS

SENIOR BUCK & SENIOR DOE: 6 MONTHS OF AGE AND OVER

JUNIOR BUCK & JUNIOR DOE: UNDER 6 MONTHS OF AGE

HEAVY WEIGHT CLASSES

- | | |
|----------------------|---------------------|
| 1. SENIOR BUCK | 4. SENIOR DOE |
| 2. INTERMEDIATE BUCK | 5. INTERMEDIATE DOE |
| 3. JUNIOR BUCK | 6. JUNIOR DOE |

LIGHT WEIGHT BREEDS

- | | |
|----------------|---------------|
| 1. SENIOR BUCK | 3. SENIOR DOE |
| 2. JUNIOR BUCK | 4. JUNIOR DOE |

DIVISION #	BREED	VARIETY	DIVISION #	BREED	VARIETY
2000	AMERICAN**	BLUE	2028	DUTCH	BLUE
2001	AMERICAN**	WHITE	2029	DUTCH	CHINCHILLA
2002	AMERICAN CHINCHILLA**	STANDARD	2030	DUTCH	CHOCOLATE
2003	AMERICAN FUZZY LOP	BROKEN	2031	DUTCH	GRAY
2004	AMERICAN FUZZY LOP	SOLID	2032	DUTCH	STEEL
2005	AMERICAN SABLE	STANDARD	2033	DUTCH	TORTOISE
2006	ARGENTE BRUN**	STANDARD	2034	DWARF HOTOT	BLACK/CHOCOLATE
2007	BELGIAN HARE	TAN	2035.1	DWARF PAPAILLONS	BLACK
2008	BELGIAN HARE	RUFUS	2035.2	DWARF PAPAILLONS	BLUE
2009	BEVEREN**	BLACK	2035.3	DWARF PAPAILLONS	CHOCOLATE
2010	BEVEREN**	BLUE	2035	ENGLISH ANGORA	COLORED
2011	BEVEREN**	WHITE	2036	ENGLISH ANGORA	WHITE
2012	BLANC D'HOTOT**	STANDARD	2037	ENGLISH LOP**	BROKEN
2013	BRITANNIA PETITE	BLACK	2038	ENGLISH LOP**	SOLID
2014	BRITANNIA PETITE	BLACK OTTE	2039	ENGLISH SPOT	BLACK
2015	BRITANNIA PETITE	BLUE EYED WHITE	2040	ENGLISH SPOT	BLUE
2016	BRITANNIA PETITE	BROKEN	2041	ENGLISH SPOT	CHOCOLATE
2017	BRITANNIA PETITE	CHESTNUT AGOUTI	2042	ENGLISH SPOT	GOLD
2018	BRITANNIA PETITE	RUBY EYED WHITE	2043	ENGLISH SPOT	GRAY
2019	BRITANNIA PETITE	SABLE MARTEN	2044	ENGLISH SPOT	LILAC
2020	BRITANNIA PETITE	SIAMESE SABLE	2045	ENGLISH SPOT	TORTOISE
2021	CALIFORNIAN**	STANDARD	2046	FLEMISH GIANT**	BLACK
2022	CHAMPAGNE D'ARGENT**	STANDARD	2047	FLEMISH GIANT**	BLUE
2023	CHECKERED GIANT**	BLACK	2048	FLEMISH GIANT**	FAWN
2024	CHECKERED GIANT**	BLUE	2049	FLEMISH GIANT**	LIGHT GRAY
2025	CINNAMON**	STANDARD	2050	FLEMISH GIANT**	SANDY
2026	CRÈME D'ARGENT**	STANDARD	2051	FLEMISH GIANT**	STEEL GRAY
2027	DUTCH	BLACK	2052	FLEMISH GIANT**	WHITE

SOCAL LIVESTOCK

OPEN RABBITS

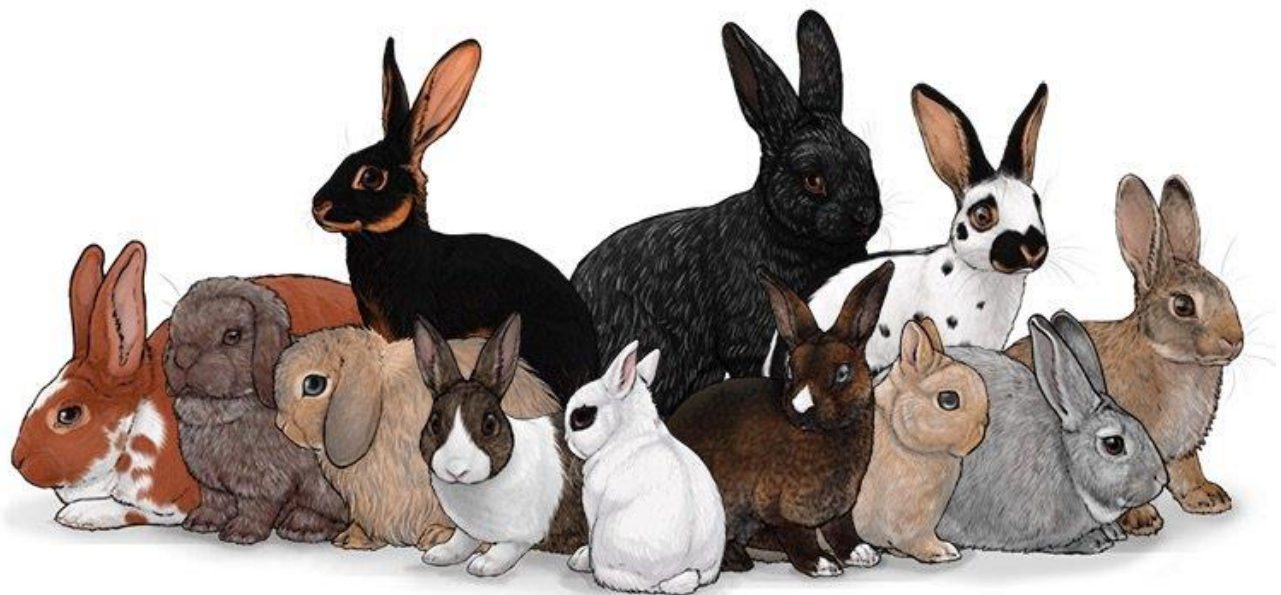
ENTRIES ARE DUE ONLINE BY OCTOBER 2, 2024, 11:59 PM PST

DIVISION #	BREED	VARIETY	DIVISION #	BREED	VARIETY
2053	FLORIDA WHITE	STANDARD	2103	MINI REX	SILVER MARTEN
2054	FRENCH ANGORA	COLORED	2104	MINI REX	SMOKE PEARL
2055	FRENCH ANGORA	WHITE	2105	MINI REX	TORTOISE
2056	FRENCH LOP**	BROKEN	2106	MINI REX	WHITE
2057	FRENCH LOP**	SOLID	2107	MINI SATIN	BLACK
2058	GIANT ANGORA**	STANDARD	2108	MINI SATIN	BLUE
2059	GIANT CHINCHILLA**	STANDARD	2109	MINI SATIN	BROKEN
2060	HARLEQUIN	JAPANESE	2110	MINI SATIN	CHINCHILLA
2061	HARLEQUIN	MAGPIE	2111	MINI SATIN	CHOCOLATE
2062	HAVANA	BLACK	2112	MINI SATIN	CHOCOLATE AGOUTI
2063	HAVANA	BLUE	2113	MINI SATIN	COPPER
2064	HAVANA	BROKEN	2114	MINI SATIN	HIMALAYAN
2065	HAVANA	CHOCOLATE	2115	MINI SATIN	OPAL
2066	HAVANA	LILAC	2116	MINI SATIN	OTTER
2067	HIMALAYAN	BLACK	2117	MINI SATIN	RED
2068	HIMALAYAN	BLUE	2118	MINI SATIN	SIAMESE
2069	HIMALAYAN	CHOCOLATE	2119	MINI SATIN	SILVER MARTEN
2070	HIMALAYAN	LILAC	2120	MINI SATIN	SQUIRREL
2071	HOLLAND LOP	BROKEN	2121	MINI SATIN	TORTOISE
2072	HOLLAND LOP	SOLID	2122	MINI SATIN	WHITE
2073	JERSEY WOOLY	AGOUTI	2123	NETHERLAND DWARF	GR.1-BLACK
2074	JERSEY WOOLY	AOV	2124	NETHERLAND DWARF	GR.1-BLUE
2075	JERSEY WOOLY	BROKEN	2125	NETHERLAND DWARF	GR.1-CHOCOLATE
2076	JERSEY WOOLY	SELF	2126	NETHERLAND DWARF	GR.1-LILAC
2077	JERSEY WOOLY	SHADED	2127	NETHERLAND DWARF	GR.1-BLUE EYED WHITE
2078	JERSEY WOOLY	TAN PATTERN	2128	NETHERLAND DWARF	GR.1-RUBY EYED WHITE
2079	LILAC	PATTERN	2129	NETHERLAND DWARF	GR.2-SABLE POINT
2080	LIONHEAD	CHOCOLATE	2130	NETHERLAND DWARF	GR.2-SIAMESE SABLE
2081	LIONHEAD	RUBY EYED WHITE	2131	NETHERLAND DWARF	GR.2-SIAMESE SMOKE PEARL
2082	LIONHEAD	SIAMESE SABLE	2132	NETHERLAND DWARF	GR.2-TORTOISE SHELL
2083	LIONHEAD	SEAL	2133	NETHERLAND DWARF	GR.2-BLUE TORTOISE SHELL
2084	LIONHEAD	TORTOISE	2134	NETHERLAND DWARF	GR.3-CHESTNUT
2085	MINI LOP	BROKEN	2135	NETHERLAND DWARF	GR.3-CHINCHILLA
2086	MINI LOP	SOLID	2136	NETHERLAND DWARF	GR.3-LYNX
2087	MINI REX	BLACK	2137	NETHERLAND DWARF	GR.3-OPAL
2088	MINI REX	BLUE	2138	NETHERLAND DWARF	GR.3-SQUIRREL
2089	MINI REX	BLUE EYED WHITE	2139	NETHERLAND DWARF	GR.4-OTTER
2090	MINI REX	BROKEN	2140	NETHERLAND DWARF	GR.4-SABLE MARTEN
2091	MINI REX	CASTOR	2141	NETHERLAND DWARF	GR.4-SILVER MARTEN
2092	MINI REX	CHINCHILLA	2142	NETHERLAND DWARF	GR.4-SMOKE PEARL MARTEN
2093	MINI REX	CHOCOLATE	2143	NETHERLAND DWARF	GR.4-TAN
2094	MINI REX	HIMALAYAN	2144	NETHERLAND DWARF	GR.5-BROKEN
2095	MINI REX	LILAC	2145	NETHERLAND DWARF	GR.5-FAWN
2096	MINI REX	LYNX	2146	NETHERLAND DWARF	GR.5-HIMALAYAN
2097	MINI REX	OPAL	2147	NETHERLAND DWARF	GR.5-ORANGE
2098	MINI REX	OTTER	2148	NETHERLAND DWARF	GR.5-STEEL
2099	MINI REX	RED	2149	NEW ZEALAND**	BLACK
2100	MINI REX	SABLE	2150	NEW ZEALAND**	BLUE
2101	MINI REX	SABLE POINT	2151	NEW ZEALAND**	BROKEN
2102	MINI REX	SEAL	2152	NEW ZEALAND**	RED

SOCAL LIVESTOCK OPEN RABBITS

ENTRIES ARE DUE ONLINE BY OCTOBER 2, 2024, 11:59 PM PST

DIVISION #	BREED	VARIETY	DIVISION #	BREED	VARIETY
2153	NEW ZEALAND**	WHITE	2181	SATIN**	BLUE
2154	PALOMINO**	GOLDEN	2182	SATIN**	BROKEN
2155	PALOMINO**	LYNX	2183	SATIN**	CALIFORNIAN
2156	POLISH	BLACK	2184	SATIN**	CHINCHILLA
2157	POLISH	BLUE	2185	SATIN**	CHOCOLATE
2158	POLISH	BROKEN	2186	SATIN**	COPPER
2159	POLISH	CHOCOLATE	2187	SATIN**	OTTER
2160	POLISH	BLUE EYED WHITE	2188	SATIN**	RED
2161	POLISH	RUBY EYED WHITE	2189	SATIN**	SIAMESE
2162	REX	AMBER	2190	SATIN**	WHITE
2163	REX	BLACK	2191	SATIN ANGORA	COLORS
2164	REX	BLUE	2192	SATIN ANGORA	WHITE
2165	REX	BROKEN	2193	SILVER	BLACK
2166	REX	CALIFORNIAN	2194	SILVER	BROWN
2167	REX	CASTOR	2195	SILVER	FAWN
2168	REX	CHINCHILLA	2196	SILVER FOX**	BLACK
2169	REX	CHOCOLATE	2197	SILVER MARTEN	BLACK
2170	REX	LILAC	2198	SILVER MARTEN	BLUE
2171	REX	LYNX	2199	SILVER MARTEN	CHOCOLATE
2172	REX	OPAL	2200	SILVER MARTEN	SABLE
2173	REX	OTTER	2201	STANDARD CHINCHILLA	STANDARD
2174	REX	RED	2202	TAN	BLACK
2175	REX	SABLE	2203	TAN	BLUE
2176	REX	SEAL	2204	TAN	CHOCOLATE
2177	REX	WHITE	2205	TAN	LILAC
2178	RHINELANDER	BLACK	2206	THRIANTA	STANDARD
2179	RHINELANDER	BLUE			
2180	SATIN**	BLACK			



SOCAL LIVESTOCK

OPEN RABBITS

ENTRIES ARE DUE ONLINE BY OCTOBER 2, 2024, 11:59 PM PST

FUR DIVISION

ENTRY FEE: \$3.50

RULES

1. RABBITS MUST HAVE BEEN SHOWN IN THE BREED CLASS.
2. DISQUALIFIED OR ELIMINATED ANIMALS CANNOT COMPETE IN FUR AND WOOL.
3. DUPLICATION OF EAR MARKINGS IS ACCEPTED ON ANIMALS OF DIFFERENT BREEDS IN FUR AND WOOL.
4. NO SUBSTITUTION MAY BE MADE IN FUR OR WOOL UNLESS A SUBSTITUTION IS MADE IN THE BREED CLASS. FUR ENTRIES MUST BE ENTERED ONLINE AS A SEPARATE ENTRY. THE ABSENCE OF EARMARKING ON THE ENTRY WILL DISQUALIFY THE RABBIT FROM THE COMPETITION.

DIVISION 2207 – FUR

CLASS: (BREED & VARIETY)

- 1 BREED FUR-COLORED
- 2 BREED FUR-WHITE
- 3 COMMERCIAL NORMAL FUR-COLORED
- 4 COMMERCIAL NORMAL FUR-WHITE

****Exhibitor must name Breed and Variety on the entry when making an entry in division.